

Circulator Flange Dimensions

Individual flanges								
Armstrong		Bell & Gossett		Dimensions				Diagram
Cast iron	Bronze	Cast iron	Bronze	A	B	C	D	
104300-011	104300-041	P03300	P06660	1 ¼"	3 7/16"	4 ¾"	½"	1
104301-011	104301-041	P03410	P06690	1 ½"	3 7/16"	4 ¾"	½"	1
105188-011	105188-041	F74000	F74800	3"	5 1/16"	6"	9/16"	2
105189-011	105189-041	P03560	P06750	2 ½"	5 1/16"	6"	9/16"	2
105210-011	105210-041	---	---	2"	3 ¾"	4 7/8"	9/16"	2
106073-011	106073-041	P01500	P06620	1"	3 7/16"	4 ¾"	½"	1
106074-011	106074-041	---	---	2"	3 5/32"	5 1/8"	5/8"	2
116009-011	116009-041	P03430	P03450	1 ½"	3 5/32"	4 ¼"	½"	1
116011-011	116011-041	P03250	P06640	1 ¼"	3 5/32"	4 ¼"	½"	1
116012-011	116012-041	P01510	---	1"	3 5/32"	4 ¼"	½"	1
116013-011	116013-041	P00740	---	¾"	3 5/32"	4 ¼"	½"	1
133615-010	106466-041	A24600	---	3"	6"	7 ½"	¾"	2

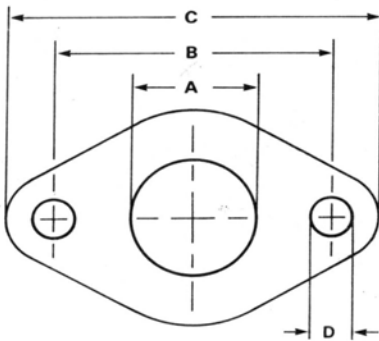


Diagram 1

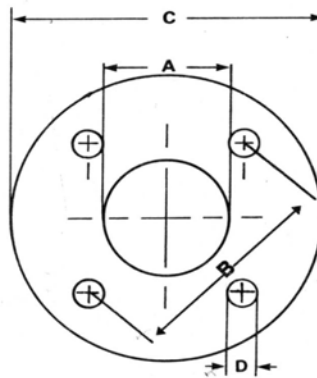


Diagram 2