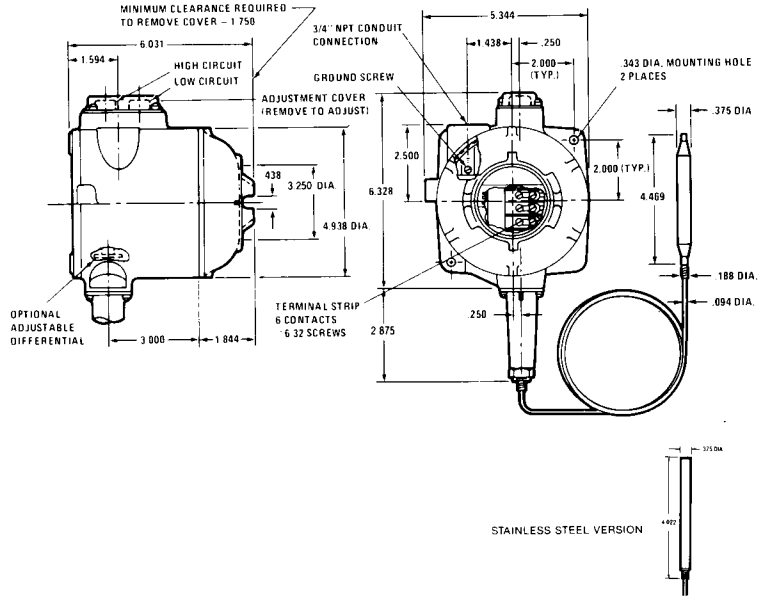
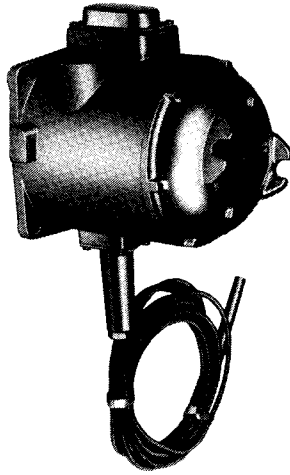


Barksdale Explosion-Proof Temperature Switches

T2X Description:

Dual Setting
 Remote Bulb
 Designed for Hazardous Locations:
 UL listed and CSA certified
 Meets Class I, Division 1 & 2
 Groups B, C and D.
 Class II, Groups E, F and G. Class III.
 Enclosure Classification: NEMA 4, 7, 9
 Tamperproof External Adjustment
 Enclosed Terminal Strip
 Thermowells Available



Operating Characteristics • Ordering Data

Calibrated Dial Adjustment	Media Temperature Limit (Proof)				Adjustable Range				Differential (Approx.)* Liquid/Low Circuit		Catalog Numbers		
	°F		°C		°F		°C		°F	°C	304 Stainless Bulb and Capillary		
	Low	High	Low	High	Low	High	Low	High			6 Foot Cap.	12 Foot Cap.	12 Ft. Cap. W/302 S/S Armor
Calibrated 5° Subdivision 200° Span	-100	+200	-73	+93	-65	+135	-54	+57	1 to 2	.5 to 1.1	T2X-H152S	T2X-H152S-12	T2X-H152S-12-A
	-100	+200	-73	+93	-50	+150	-45	+66	1 to 2	.5 to 1.1	T2X-H154S	T2X-H154S-12	T2X-H154S-12-A
	-100	+300	-73	+149	+50	+250	+10	+121	1 to 2	.5 to 1.1	T2X-H251S	T2X-H251S-12	T2X-H251S-12-A
	-100	+400	-73	+205	+150	+350	+66	+177	1 to 2	.5 to 1.1	T2X-H351S	T2X-H351S-12	T2X-H351S-12-A
Calibrated 5° Subdivision 140° Span	0	+650	-18	+343	+300	+440	+149	+227	2 to 4	1.1 to 2.2	T2X-H601S	T2X-H601S-12	T2X-H601S-12-A
	0	+650	-18	+343	+360	+500	+182	+260	2 to 4	1.1 to 2.2	T2X-H604S	T2X-H604S-12	T2X-H604S-12-A
	0	+650	-18	+343	+460	+600	+238	+316	2 to 4	1.1 to 2.2	T2X-H605S	T2X-H605S-12	T2X-H605S-12-A
10° Subdivision 280° Span	0	+650	-18	+343	+300	+580	+149	+304	2 to 4	1.1 to 2.2	T2X-H602S	T2X-H602S-12	T2X-H602S-12-A
	0	+650	-18	+343	+320	+600	+160	+316	2 to 4	1.1 to 2.2	T2X-H603S	T2X-H603S-12	T2X-H603S-12-A

*Test conditions and media used could affect differential.

Approx. Shipping Weight 7 lbs.

Detail Data

Electrical Characteristics: All models incorporate Underwriters' Laboratories, Inc. listed single pole double throw snap-action switching elements. Electrical rating (continuous inductive) 10 amps 125 or 250 volts AC, 3 amps 480 volts AC. Automatically reset by snap-action of switch. For more details and other switch classes, see page 14.

Electrical Connection: Screw terminals on covered terminal strip through 3/4" npt conduit connection.

Terminals Identified: Low Circuit - C (Common), N.C. (Normally Closed), N.O. (Normally Open); High Circuit - C (Common), N.C. (Normally Closed), N.O. (Normally Open).

Wire Coding: Low Circuit - Purple (Common), Blue (Normally Closed), Red (Normally Open); High Circuit - Brown (Common), Orange (Normally Closed), Yellow (Normally Open).

Adjustment Instructions: Turn adjustment knob clockwise to increase actuation point (switch setting).

Optional Modifications

Thermowells and accessories in brass or 316 stainless steel available. Special capillary variations also available. For complete information, refer to page 13.

MANUAL RESET AVAILABLE. Consult factory for price and delivery.

All models on this page have the following U.L. and C.S.A. listings:



Underwriters' Laboratories, Inc. Temperature indicating and regulating equipment, for use in hazardous locations. Class I, groups B, C and D; Class II, groups E, F and G; File No. E58658, Guide No. XBDV.



Canadian Standards Association. Temperature indicating and regulating equipment, for use in hazardous locations. Class I, groups C and D; Class II, groups E, F and G; Class III. File No. LR34556, Guide NO. 400-E-0.8. Class 4868.