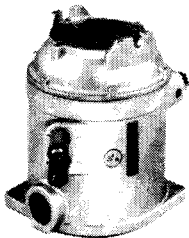


Explosion Proof Diaphragm Models
 Enclosure (NEMA 4, 7, 9)
 For Type 4, 7, & 9 Locations
 Terminal Strip
 Tamper-proof External Adjustment



All models on this page are Underwriters' Laboratories, Inc. and Canadian Standards Assn. listed for use in hazardous locations Class I, Groups B, C & D; Class II, Groups E, F & G.

OPERATING CHARACTERISTICS • ORDERING DATA



D1X-UL SINGLE SETTING

D2X-UL DUAL CONTROL

PRESSURE SWITCHES - All values given in P.S.I. (Gauge)

Proof (Test) Pressure	Adjustable Range				Approximate Actuation Value (Differential)	Wetted Material	Catalog Number	
	Decreasing		Increasing				D1X	D2X
	Min.	Max.	Min.	Max.				
10.00	0.03	2.85	0.18	3.00	0.07 to 0.15	17-7PH	D1X-A3SS-UL	D2X-A3SS-UL
60.00	0.40	17.74	0.66	18.00	0.12 to 0.26	17-7PH	D1X-H18SS-UL	D2X-H18SS-UL
160.00	0.50	76.60	3.90	80.00	1.60 to 3.40	17-7PH	D1X-A80SS-UL	D2X-A80SS-UL
300.00	1.50	144.00	7.50	150.00	2.30 to 6.00	17-7PH	D1X-A150SS-UL	D2X-A150SS-UL

Approximate shipping weight: 7.00 lbs.

WIRE CODING — PRESSURE
 Circuit #1: Common — Purple
 Normally Closed — Blue
 Normally Open — Red
 Circuit #2: Common — Brown
 Normally Closed — Orange
 Normally Open — Yellow

WIRE CODING — VACUUM
 Circuit #1: Common — Purple
 Normally Closed — Red
 Normally Open — Blue
 Circuit #2: Common — Brown
 Normally Closed — Yellow
 Normally Open — Orange

VACUUM SWITCHES - All values given in inches of mercury (Gauge)

Proof (Test) Vacuum	Proof (Test) Pressure	Adjustable Range				Approximate Actuation Value (Differential)	Wetted Material	Catalog Number	
		Dec. Vacuum		Incr. Vacuum				D1X-UL	D2X-UL
		Min.	Max.	Min.	Max.				
6.00	10 P.S.I.	0.06	5.72	0.34	6.00	0.14 to 0.28	17-7PH **	D1X-A3SS-UL	D2X-A3SS-UL
30.00	60 P.S.I.	0.80	29.20	1.60	30.00	0.40 to 0.80	17-7PH **	D1X-H18SS-UL	D2X-H18SS-UL

Approximate shipping weight: 7.00 lbs.

17-7PH Stainless Steel

DETAIL DATA

ELECTRICAL CHARACTERISTICS: All models incorporate Underwriters' laboratories, Inc. listed single pole double throw snap-action switching elements.

ELECTRICAL CONNECTION: To screw terminals on covered terminal strip through 1/2" npt (D1X) and 3/4" npt (D2X) conduit connectors.

PRESSURE (VACUUM) CONNECTION: 1/4" npt internal thread.

ADJUSTMENT INSTRUCTIONS

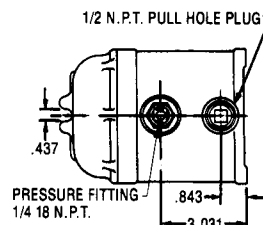
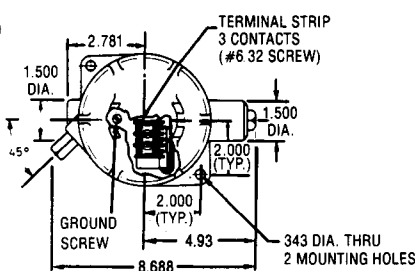
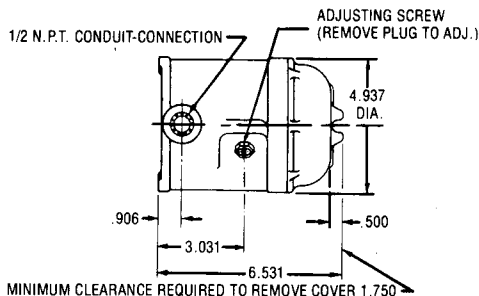
Positive Pressure: Turn adjustment screw clockwise to lower actuation point (switch setting).
Vacuum: Turn adjustment screw counterclockwise to approach atmospheric pressure.

OPTIONAL MODIFICATIONS:

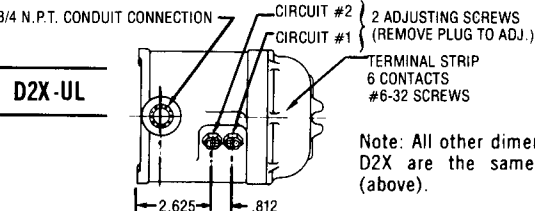
1/2" NPT Female pressure connection. Add -P2 to catalog number when ordering.

Hermetically Sealed Switch Elements (not U.L. or C.S.A. approved): To specify, add prefix "H" to switch number and change standard class of electrical switch to either -AA or -HH. Example: HD1X-AA18, HD1X-HH18. See page 36 for approximate differential by class of switch element and electrical ratings.

D1X-UL



U.L. listed units are available with the following classes of switch elements. (Consult pages 34-36 for operating characteristics). To specify, substitute class of desired switch elements in the complete catalog number. Example: D1X-A18SS-UL



D2X-UL

ELECTRICAL RATINGS:

AC Ratings	Inductive Load — 50% Power Factor												
	Maximum Continuous Current (amps)												
Class of Switch	A	B	C	E	F	GH	H	J	K	L	M	X	
Volts 125	10	10	10	10	10	1.0	10	10	10	15	10	10	
AC 250	10	10	10	10	10	—	10	10	10	15	10	10	
480	3	10	10	10	10	—	3	3	10	15	3	3	

DC Ratings	Inductive Load — L/R = .026												
	Maximum Continuous Current (amps)												
Class of Switch	A	B	C	E	F	GH	H	J	K	L	M	X	
Volts 125	—	.05	.1	.05	.4	—	—	—	.05	.03	.5	.5	
DC 250	—	.03	.05	.03	.2	—	—	—	.03	.02	.25	.25	